

A Kansas Community Development NEWSLETTER



Number 1

September 3, 1971

STEERING COMMITTEE INITIATES PRIDE NEWSLETTER TO KEEP DEVELOPMENT GROUPS INFORMED

This is the first monthly PRIDE newsletter issued by the State Committee. It will contain information about progress in communities, resources available for assistance, area and state events, and other items. You are encouraged to suggest information that should be included.

PRIDE (Programming Resources with Initiative for Development Effectiveness) was organized in 1970. It is a united effort to encourage all communities in Kansas, regardless of size, to identify their opportunities and problems, set goals, and strive to make their communities even better places to live.

Any group or individual within a community can start the ball rolling by inviting personnel from Kansas Department of Economic Development; Cooperative Extension Service at Kansas State University; or other State PRIDE Steering Committee members to present information about PRIDE to local clubs and organizations.

There are two approaches in the program - cash awards for community achievement, and blue ribbon recognition. Support activities will be coordinated by the Kansas Department of Economic Development. KDED will provide participant signs, select evaluation judges, arrange for financial support, and assist the Governor with award presentations. Cash awards will be given to communities only when substantial progress is shown.

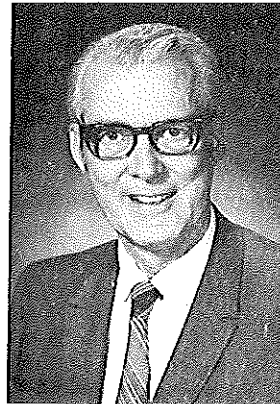
CHANUTE FIRST TO RECEIVE BLUE RIBBON RECOGNITION

Chanute became the first city in the state to receive a blue ribbon in the PRIDE Program.

Mayor Vesta Lightfoot accepted the ribbon

on behalf of the city at ceremonies held in front of the memorial building July 7. PRIDE chairman Joyce Wells presented the ribbon to the mayor.

NEW CHAIRMAN NAMED BY STATE PRIDE STEERING COMMITTEE



George Billings

George Billings, Vice-President for Area Development, Kansas Gas and Electric at Wichita, was elected chairman of the State PRIDE Steering Committee in June.

Billings served on the Business and Economic Development Council of the Kansas State Chamber of Commerce. He has been a member of the Kansas Small Business Advisory Council. Billings was appointed by Governor Docking to serve on the South Central Kansas Regional Planning Advisory Committee. He is listed in "Who's Who In Commerce and Industry."

He, his wife, Betsy, and their two children live in the Westlink Development at Wichita, Kansas.

Vice-chairmen elected were:

Dr. Robert A. Bohannon, Director of the Cooperative Extension Service at Kansas State University, and Jack Lacy, Director of the Kansas Department of Economic Development.

NEW CHECK SHEETS AVAILABLE

Thirteen new or revised inventory sheets are now available and will be sent to chair-

men of local steering committees. As a community meets the minimum criteria in a particular category and the accomplishments have been confirmed by outside evaluators, it will be awarded a "blue ribbon" to display on the participant's signs.

In this way persons traveling through the community will be able to recognize the community's achievements and standards. The blue ribbons will remain on the signs as long as the community is a part of the PRIDE Program and maintains the established standards.

57 COMMUNITIES NOW ENROLLED IN
FIRST YEAR OF PRIDE PROGRAM

Fifty-seven communities have made entry in the PRIDE Program. They are:

Under 500 population:

Glade	New Strawn	Gaylord
Horace	Potwin	McCune

501 to 1,500 population:

Whitewater	Colwich	St. Marys
Cawker City	Buhler	Alma
Burlingame	Burrton	Goddard
Holyrood	Kensington	Wakefield
Tribune	LaCygne	Lyndon
LeRoy	Sedgwick	Towanda

1,501 to 4,000 population:

Syracuse	Dighton	Belleville
Oberlin	Hillsboro	St. Francis
Ellsworth	Cherryvale	Garnett
Ulysses	Smith Center	Hesston
Galena	Hugoton	Andover
Lindsborg	Halstead	Wamego
Belle Plaine		

George Billings, Chairman, Kansas
Community PRIDE Committee
Box 208
Wichita, Kansas 67201

4,001 to 10,000 population:

Concordia	Goodland	Haysville
Beloit	Derby	Russell

10,001 to 20,000 population:

Chanute	Winfield	Newton
Ark City	Independence	

20,001 to 50,000 population:

Pittsburg	Emporia
-----------	---------

Over 50,000 population:

Topeka

PRIDE SCRAPBOOKS DUE FOR FIRST YEAR JUDGING

Those communities that entered the community awards program prior to February 15, 1971, should submit scrapbook records to KDED, State Office Building at Topeka, Kansas by September 30, 1971.

Governor Robert Docking will present awards to community representatives at the Governors PRIDE Awards Conference scheduled for 10:00 a.m. October 20 at the Ramada Inn at Topeka, Kansas.

Each individual category should be preceded by an 8 1/2" X 11" sheet of paper that may include:

Category and sub-areas; whether project is new or continuing; project date; participating organizations or individuals; goals of project; description of accomplishments; benefit to community; and problems, recommendations, or comments.

Following the introduction, information should be included that documents the communities efforts.

<p>Bulk Rate U. S. Postage PAID Topeka, Kansas Permit No. 198</p>
