



# A Kansas Community Development

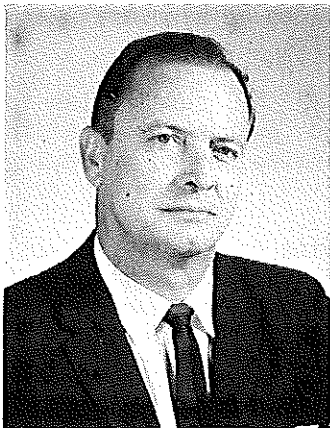
# NEWSLETTER



Number 4

January 10, 1972

## NEW CHAIRMAN NAMED BY STATE PRIDE STEERING COMMITTEE



Joe S. Clark

Joe S. Clark, manager of Industrial Development of Atchison, Topeka, and Santa Fe Railway Company, was elected chairman of the State PRIDE Steering Committee in November.

Clark, in addition to being a member of various industrial committees and chambers of commerce, is a member

of the American Railway Development Association and a member of the Executive Committee of Business and Economic Development Council of the Kansas State Chamber of Commerce.

He and his wife, Joyce, live in Topeka. A daughter, Pam, graduated from the University of Texas last May and now works in Dallas.

Clark attended Kilgore College, University of Texas, and the Institute of Business Economics at the University of Southern California. He served four years in United States Marine Corps.

## GUIDELINES FOR PRIDE REPORT BOOKS

Communities that wish to enter the 1972 PRIDE Cash Awards program must be entered February 1, 1972, and must submit a PRIDE record book by September 1, 1972. An entry for the 1972 program must be made even though an entry form was sent in for last year's program.

The report or scrapbooks should show: community PRIDE goals, community awareness, involvement of people and organizations or groups, and accomplishments for the program

year. The book can be made of standard scrapbook materials, but should be no larger than 12" x 18". The first page should include a listing of the PRIDE Steering Committee (picture optional), and the second page should contain a table of contents.

The book may include before and after pictures, newspaper clippings, narratives, and other materials. Included should be the dates the projects were started and when they were completed - if they have been completed. In some projects, it will be necessary to indicate that they are a part of a long-range program that may continue for more than one year. In such cases, the projects may also be considered in future years.

Cash awards will be given only where communities have made substantial progress on projects. Communities may enter the Blue Ribbon phase of the program at any time during the year.

## GREELEY PRIDE BANQUET AND REPORT PROGRAM

There were 180 persons in attendance at the Greeley County PRIDE banquet and program held in Tribune December 2 to report on accomplishments made last year. Mrs. Virginia Woods reported 50 children under 15 years of age had helped in the work in various ways in Horace, Kansas. They hauled 22 loads of junk to the junkyard and started a park.

Rick Simpson told of other accomplishments in the county and in Tribune, Kansas. A movie about the Kansas PRIDE program was shown. Those in attendance voted to enter the 1972 program.

## NEW REGIONAL JOURNAL

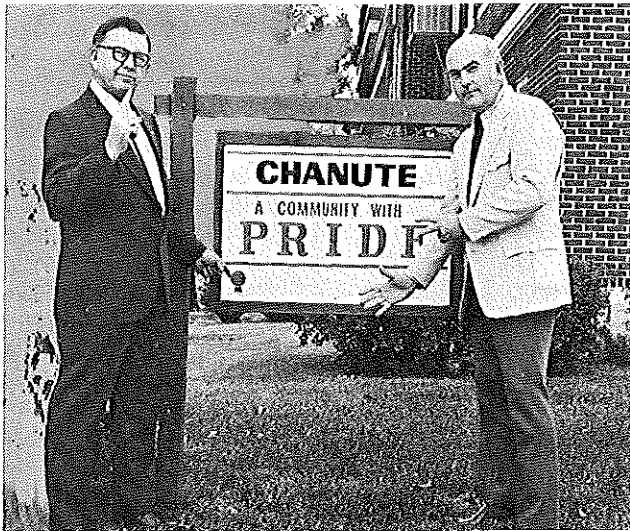
A new regional bulletin has been initiated by the Kansas State University Department of Economics. The journal, "Regional Science Perspectives", is a collection of papers related to regional and urban develop-

ment. The first issue includes articles on public policy, migration, land use, outdoor recreation management, optimal size of cities, and regional growth models.

Subscriptions may be purchased by writing to: Dr. M. Jarvin Emerson, Managing Editor, Department of Economics, Kansas State University, Manhattan, Kansas.

---

ONE BLUE RIBBON RECEIVED  
AND SEVEN TO GO



Maurice Regan (left) and Royce Wells indicate that one blue ribbon has been received in the Chanute PRIDE program, and their goal is to get seven more. The ribbon shown is for community planning. Since the picture was taken, they have qualified for a blue ribbon in housing.

Joe S. Clark, Chairman, Kansas  
Community PRIDE Committee  
Box 1738  
Topeka, Kansas 66612

PRIDE COMMUNITY  
DEVELOPMENT ACTIVITY

Caldwell - Plans have been made to make a community survey.

Hesston - The PRIDE steering committee is planning to make a survey of the community. They are receiving assistance from Wichita State University and Hesston College.

Norton - The Norton Chamber of Commerce and City Council endorsed the PRIDE program.

Burrton - A PRIDE priorities committee and steering committee listed 16 community projects. They also named possible resources available, roadblocks to be overcome, and task forces to accomplish the work.

Miltonvale - Leaders in Miltonvale plan to ask several community groups to assist in formulating a questionnaire before surveying the community.

Pawnee Rock - Twenty-nine community projects were listed by a priorities committee and steering committee. They also named possible resources available, roadblocks to be overcome, and task forces for the projects.

---

KANSAS PRIDE COMMITTEE

Chairman - Joe S. Clark, Atchinson, Topeka and Santa Fe Railway.  
Vice-Chairman - Robert A. Bohannon, Cooperative Extension Service, K.S.U.  
Vice-Chairman - Jack Lacy, Kansas Department of Economic Development.  
Treasurer - Lou Atherton, Kansas City Power and Light.

Bulk Rate U. S. Postage <b>PAID</b> Topeka, Kansas Permit No. 198
---