

ganizational groups with the entire population, and of course they are looking for Accomplishments of the city."

"In Greenleaf, Kansas, we feel very strongly about the PRIDE Program. Prior to the PRIDE program we talked about our problems, and we cried about our problems but never did we try to solve any of our problems. PRIDE caused us to look at our problems, evaluate our resources, arrive at and project possible solutions, and it injected into the populace of the area the esprit de corps and the tenacity to implement some of the necessary programs. I do not want to leave you with the impression that in one year Greenleaf has solved all her problems, but I do want you to know that we are off and running. Every citizen is involved. Every citizen is thinking. And every citizen is giving more than he is taking from the community."

"Let's face it folks. It is a thrill to compete--fun to contend for PRIDE awards. I wish you, Centralia, were in our population category so we could compete with you. We'd throw you the challenge and then motivate you to work, perspire, and toil to beat us at our game."

"Our community projects included: the construction of two fine bleachers made of iron and lumber to assist in seating the spectators at our community events; a Christmas Lighting contest among our homeowners and tenants to generate enthusiasm for beautification; the acquisition of additional Christmas decorations for the downtown area with a gimmick to inspire the people to invest in their community; the floating of an \$80,000 bond issue for the construction of a municipal swimming pool; the forming of a Development Corporation with some 140 stockholders and \$25,000 of capital structure to assist in the development of the area; the establishment of four new businesses in the community; the construction of five new homes and two modular homes; the clean-up of numerous lots;

the razing of many outbuildings on all lots; the purchase of a new Fire Truck; the organization of a Public Housing Authority; the development of a community "PRIDE" center; the construction of a new bank building; development of a community recreation program; introduction of volleyball to the adults of the community; holding a tractor pulling contest; holding a summer ball program for men, women, girls, couples, and children; and four ball tournaments."

"Many events were initiated to raise money such as: car wash; chicken & oyster fry; family show; Showcase '72; benefit games; ice cream social; fun fest; and other. In fact we were so effective in raising money that we had to appoint another committee to assist in the spending of the funds. Today we are organizing both a City Tree Planning Commission and a City Planning Commission. We are in the process of developing a City Plan. We are beginning to think not only of the present, but are planning two, three, four and five years down the road."

"I have rambled on enough about PRIDE and my community of Greenleaf. Centralia, from looking at your community, checking some pertinent figures, and seeing the enthusiasm here this evening, it is obvious, you are a raw gem."

"A group of you must get together and pledge yourself to the rejuvenation of the population and area. You must pledge yourself to unity, to work, and to dollar investments. Each of you make investments in yourselves, your businesses, and your families, but some of you may not do likewise with your community. If your community is to grow and prosper, everyone must also make the investment in their community. You must give of yourself, and of your resources, whatever they may be. You must all not only be involved, but fully committed to the project."

4-131-3-4.4M



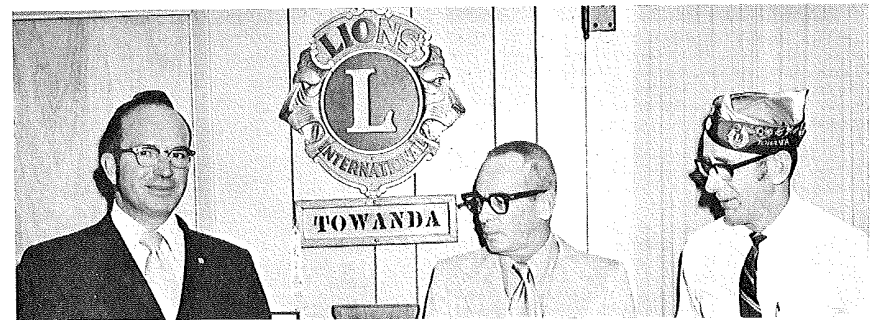
# A Kansas Community Development NEWSLETTER



Number 15

May 1, 1973

## LIONS CLUB SPONSORS PRIDE



Marian Anderson (Left), Agent for Kansas Gas and Electric Company and President of the Towanda Lions Club; Milford Piper (Center), Towanda Mayor; and Paul Boyer, Chairman of the Community PRIDE Program discuss civic club sponsorship of the PRIDE Program. A public meeting was held after the regular Lions Club meeting where plans were made for a house to house attitude survey for the city.

## PRIDE COMMUNITY DEVELOPMENT ACTIVITY

### Lebanon

(Phyllis Bell, Chairperson) Projects planned or being worked on are: fix up golf course, sign for centennial, improve rest rooms in park, wooden street signs, assign and put up house numbers, box supper for fund raising, before and after pictures for projects, plant trees and city sewer.

### Goessel

(LeRoy Ratzloff, Chairperson) Projects are: Wheat Palace; curb and guttering; cleaning main creek through town; new hospital construction; construction of new restaurant; rebuilding tennis court; and voting on a city library.

### Arkansas City

(Jim McNeal, Chairperson) The areas in the community that needed improvement have been defined. A program of work was outlined. Target areas were: development of downtown, economic development, industries, human resources and housing. 'In Stride With PRIDE' was adopted as the community motto. A public meeting was held on underground utilities in the downtown section.

### Marion

(Mrs. Eloise Mueller, Chairperson) The Federated Women's Club of Marion adopted a program, "Business for Beauty" that will encourage improved appearance standards by local businesses. The primary purpose is to convince both small and large businesses that single landscaping and renovation can do much to give a new look. All local businesses completing any kind of improvement to their exterior appearance will be recognized with certificates of commendation from the Federated Women's Club. One local firm will be singled out for additional recognition to compete statewide. Ray Weisenberger and graduate students of the Department of Regional and Community Planning of Kansas State University will prepare a design concept for downtown improvement.

### Cottonwood Falls

(Gilbert Haug, Chairperson) PRIDE Tree Committee is compiling materials and information on replacing trees that are diseased or damaged. Additional trees will also be planted.

Roy A. Best, Chairman, Kansas  
Community PRIDE Committee  
7920 Ward Parkway  
Kansas City, Missouri 64114

Bulk Rate  
U. S. Postage  
PAID  
Topeka, Kansas  
Permit No. 198

## LINDSBORG SETS GOALS



Leaders discuss Lindsborg goals. Left to right: Mrs. Judie Hahn, PRIDE Council Co-Chairman; Professor Carl Hansen, Bethany College; Dean Lloyd Forester, Project Coordinator, Bethany College; Mayor Hugo Lindahl, Member of PRIDE Steering Committee.

The Lindsborg Temporary PRIDE Steering Committee prepared and administered a community-wide survey. At a public meeting, they elected a permanent steering committee.

In December, the leaders participated in leadership training meetings set up by Bethany College through Title I project for colleges in the Associated Colleges of Central Kansas Consortium plus Hesston College. Dr. Merrill Rober of Prairie View Mental Health Center and Leadership, Inc. at Newton conducted four sessions. About two dozen leaders were in attendance. The four laboratory meetings were structured for a total of 11 1/2 hours.

"After glow" workshop sessions for everybody were then presented on three consecutive Tuesday evenings in January by two Bethany College professors.

Twenty-four projects for the community were adopted by the PRIDE Steering Committee. They were:

Community Planning -- 1. Support and actively develop South Park complex. 2. Retired persons workshop and salesroom, teen center. 3. Educate public to benefits and needs of having some industry.

Utilities -- 1. Residential lighting. 2. Highway lighting and downtown lighting. 3. Solid waste disposal.

Enrichment -- 1. Provide a Family "Y" Center. 2. Flower boxes and benches -- downtown park: clean-up in fall and spring. 3. Tourism.

Economic Development -- 1. Promote new industrial park and building. 2. Job opportunities and job training to cooperate with surrounding communities. 3. Work for proposed irrigation project.

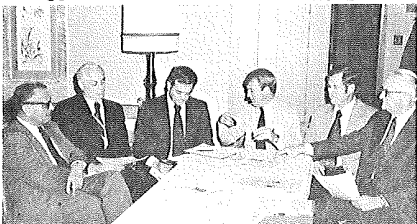
Community Services -- 1. "Meals on Wheels" for shut-in persons. 2. Tornado alert system. 3. Enforcement of pet control; bicycle ordinance enforcement and publicity.

Transportation -- 1. Airstrip (Not airport). 2. Alleviate problems of culverts on North Kansas Street. 3. Alley improvement.

Housing -- 1. Encourage up grading and improvement of existing buildings. 2. Apartment rentals available for price ranges of (a) \$100 to \$160 and (b) garden apartments of \$160 and up. 3. Housing development.

Education -- 1. Awareness of educational opportunities. 2. Improve counseling in public schools. 3. Master plan for community education.

## USDA PERSONNEL DISCUSS PRIDE



United States Department of Agriculture Area personnel for Northeast and East Central Kansas recently discussed Community Development and PRIDE at their quarterly meeting. Above (Left to Right) are: Richard King, Area Extension Director, Kansas State University; Bill Brady, Area Supervisor, Farmers Home Administration; Bill Barnes, Director, County Agricultural Stabilization and Conservation Office; Jim Geisler, Area Extension Forester, Kansas State University; Russell Shultz, Area Conservationist, Soil Conservation Service; and Earnest Meerpohl, Director, County Agricultural Stabilization and Conservation Office.

## KANSAS PRIDE STEERING COMMITTEE

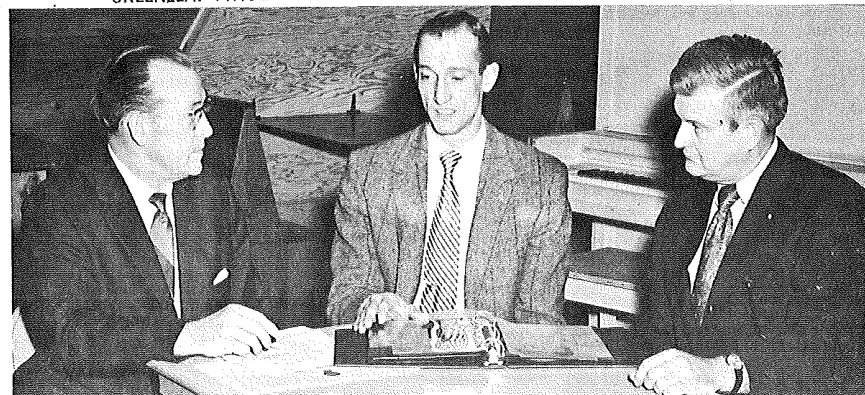
Chairman - Roy A. Best, Upland Industries Corporation.

Vice-Chairman - Robert A. Bohannon, Cooperative Extension Service, K. S. U.

Vice-Chairman - Terence Scanlon, Kansas Department of Economic Development.

Treasurer - Lou Atherton, Kansas City Power and Light.

## GREENLEAF PRIDE CHAIRMAN ADDRESSES CENTRALIA PUBLIC MEETING



Reverend Bob Williams (Left), Chairman of the Centralia, Kansas PRIDE Committee; Gary Padgett (Center), President of the Citizens National Bank at Greenleaf, Kansas; and Craig Bachman, President of the First National Bank of Centralia, Kansas, and City Mayor look at the 1972 Greenleaf PRIDE Report Book.

Gary Padgett, Chairman of the Greenleaf Kansas PRIDE Committee addressed a public PRIDE meeting at Centralia in March. One hundred persons were in attendance. The following are excerpts from Padgett's talk:

"I would like for each of you to know, first of all I am a Kansan and very proud of it, secondly I am a Kansas "Jayhawker", but also I am very interested in the Kansas State "Wildcats", and it is hard for me to understand how any group would plan a meeting for this evening. This evening being the night the Wildcats play in the NCAA Regional Basketball Tourney at Houston, Texas."

"WHY PRIDE!!! I'll tell you why--How many communities will die? How many communities will survive? Which communities will die? Which communities will survive?"

"These are the piercing questions which face us at this time. In 1960 the population of Kansas was 2,178,611. In 1970 the population of Kansas was 2,249,071. The Kansas population increased 70,460."

"In 1970 there were 644 incorporated cities in Kansas. One hundred eighty-two of these cities had population of 1,000 or more, and from 1960 to 1970 they increased in population by 218,132. Four hundred forty-two cities had population of 1,000 or less, and from 1960 to 1970 they decreased in population by 147,672."

"In 1970, Kansas had 33 cities of over 10,000 population and they had 52.4% of the total population of Kansas. If you want to expand further, you can state there are 89 cities in Kansas which have over 2,500 population, and they have 63.3% of our Kansas population. In 1970 the rural area of

Kansas and the 442 cities with population of 1,000 or less comprised only 37.7% of the state's total population."

"WHAT IS PRIDE!!! I am certain you would get as many answers to that question as there are people in this room, for PRIDE is many things to many people. It is the feeling of the leadership of this state, of the Kansas Department of Economic Development, and of myself that rural Kansas is not destined to die. However, it is the people of the area that must save it and make it grow. I can assure you, if we, the rural people of Kansas, don't believe or don't care, nothing can save the rural community. If we believe and care, nothing can stop us. My feeling is, 'A community is never finished. You can't build it and then leave it standing. A community has to be built and rebuilt. It has to be recreated in each generation by believing and caring men and women.'"

"The 'Kansas Community PRIDE' program is a unified effort to draw the entire State together through resource development emphasis. It was established to encourage all Kansas communities; regardless of size to awaken, to evaluate, to work and to compete with other communities of like size"

"PRIDE is the vehicle which with the help of the Statewide Steering Committee, Kansas Department of Economic Development, Kansas State University, and others provides the continuity for a community to become a viable part of the Kansas economy."

"WHAT IS PRIDE STEERING COMMITTEE LOOKING FOR! They are looking for the Involvement of the entire population of the city in its everyday functions and projects. They are looking for the Awareness of the entire population to the problems it faces. They are looking for the Communications of the or-