



HARVEY COUNTY RATES AMONG THE TOP counties in the state in doctor-to-resident ratio. There are thirty-five doctors, two general hospitals, and five homes for the aged. Their ambulance service was the first in the state to undertake an advanced coronary care program.



THE OBERLIN PIONEER FAMILY STATUE is located on a grass island on the main entry to the city. A Hays, Kansas artist was commissioned by Decatur County's Sappa Valley Arts Club for the project. The initial work on the 24,000 pound chunk of Kansas limestone was done in the artist's studio and it was finished at Oberlin.

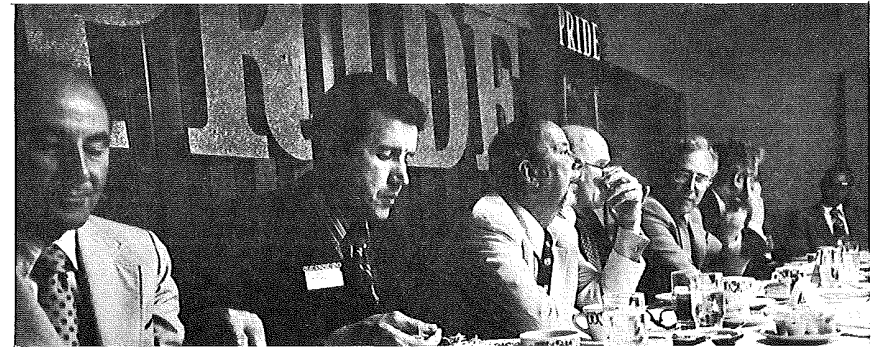


# A Kansas Community Improvement NEWSLETTER



Number 31

September 1975



MEMBERS OF STATE PRIDE COMMITTEE, Dr. Roger L. Mitchell, Vice-President for Agriculture, Kansas State University and Governor Robert Bennett at luncheon where Newton and Oberlin were designated Pacemaker cities of Kansas. (L to R) Carl Bowman, Kansas Bankers Association; Dr. Mitchell, Governor Bennett; Ernie Mosher, League of Kansas Municipalities and chairman of State PRIDE Committee; Dr. Robert Bohannon, Cooperative Extension Service, Kansas State University; James DeCoursey, Kansas Department of Economic Development; and Tom Kline, Northern Natural Gas. Other State PRIDE members attending but not pictured were: George Billings, Kansas Gas and Electric Company; Floyd Neyman, United Telephone Company of Kansas; W. L. Purdue, Kansas Power and Light Company, and Jack Groves, McPherson Chamber of Commerce.

## TENTATIVE PROGRAM

PRIDE Luncheon, Workshops, and Awards Banquet  
Tuesday, October 21, Emporia Kansas State College

12:00 noon	PRIDE Leadership Recognition Luncheon (Reservations Required, Pay at Luncheon)
2:30 - 6:00 p.m.	Nine (one) hour workshops: The Humanities and Cultural Arts, Airport Improvement, Bicentennial and Tourism, Community Beautification, Recreation and Parks, The Community Development Process, PRIDE Procedures and Idea Exchange, Preparing the Community for the Industrial Prospect, and Youth Involvement for a Better Community
6:30 p.m.	Awards Banquet (Advance Payment Required)

Kansas Department of Economic Development  
State Office Building  
Topeka, Kansas 66612

Bulk Rate  
U. S. Postage  
**PAID**  
Topeka, Kansas  
Permit No. 198

## PACEMAKERS DESIGNATED

Newton and Oberlin were designated "Pacemaker" cities of Kansas by Governor Robert Bennett at a luncheon in Topeka, June 26.

These were the first in the state to receive certificates for meeting the criteria of the Kansas PRIDE Committee in exhibiting leadership in self-evaluation, sound planning, citizen involvement and cooperative action.

The award certifies achievement of blue ribbon standards set by the State Committee in eight categories: community planning, economic development, community ser-

vices, utilities, transportation, housing, education and enrichment.

Other Kansas communities receiving blue ribbons for achievements at the Governor's luncheon were: Burrton, transportation; Geneseo, transportation and community services; Marion, economic development; and Russell, transportation and planning.

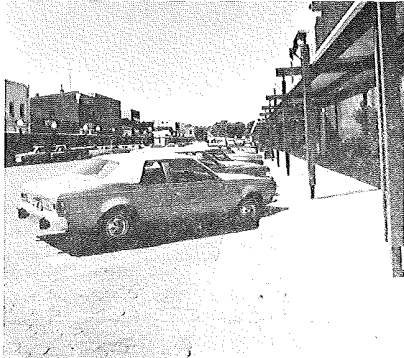
Any Kansas town may enroll in the PRIDE program and strive for Pacemaker designation by submitting an application form and obtaining endorsements from at least five community groups. To date, 200 communities have entered the program since it began in 1971.



GOVERNOR ROBERT BENNETT awards the second Pacemaker community certificate to Sally Henningson, chairman of the Oberlin PRIDE Committee. (L to R) Kent Reinhardt, Manag-

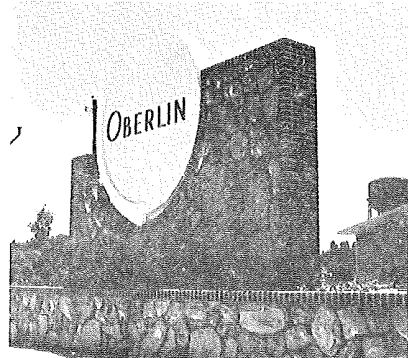
er, Decatur County Dairy; Mrs. Norman Richards, Decatur area Chamber of Commerce; Sally; Mrs. John Rule; Mayor John Rule; and Gerald Meyer, County Extension Director.

# OBERLIN



OBERLIN BUSINESS FRONTS have been remodeled and beautiful globe street lights erected. Sidewalks have been covered with canopies which protect shoppers from the weather. Interiors of most businesses have been remodeled within the past few years.

To get the downtown improvement, property owners signed petitions creating a benefit district. The project, costing approximately \$48,000, has drawn compliments and inquiries from far and near.



THE OBERLIN ENTRANCE SIGN on Highway 36 was completed in 1974 at a cost of \$4,300. Financing came from local contributors and revenue sharing funds. The structure has lights and a landscaped planter.

#### KANSAS PRIDE COMMITTEE

Chairman - Ernie Mosher, Executive Director, League of Kansas Municipalities  
 Vice-Chairman - Robert A. Bohannon, Cooperative Extension Service, K.S.U.  
 Vice-Chairman - James H. DeCoursey, Jr., Kansas Department of Economic Development  
 Treasurer - Lou Atherton, Kansas City Power and Light



GOVERNOR ROBERT BENNETT presents the first Pacemaker certificate to Virginia Williams, chairman of the Newton PRIDE Committee. (L to R) Mayor Bradford Wells; Virginia; Gov-

ernor Bennett; Dick Chamberlain, Executive Vice-president, Newton Chamber of Commerce; and Jack Barnes, County Extension Director.

# NEWTON



NEWTON'S COMMUNITY ACTIVITY CENTER provides 42,000 square feet of space for broadrange educational, social, and recreational programs for all community residents. Activities include senior citizens' meals, crafts and hobbies, exercise classes, organized sports, nursery and swimming pool. Outdoor play space for the small-fry is an attractive part of the Center.



IN THE SPRING OF 1971, the Newton Chamber of Commerce, Newton Industrial Foundation, and two land owners entered into an agreement that resulted in the Newton Industrial Park. It had 63 acres with all utilities and rail. Six firms have located in the park.

Published by Cooperative Extension Service, Kansas State University. Send articles for the newsletter to Leslie Frazier, Umberger Hall, Room 115, Kansas State University, Manhattan, Kansas 66506.