

COOPERATIVE EXTENSION SERVICE
 U.S. DEPARTMENT OF AGRICULTURE
 KANSAS STATE UNIVERSITY
 MANHATTAN, KANSAS 66506-3400

OFFICIAL BUSINESS
 PENALTY FOR PRIVATE USE, \$300

Project Record Book Due September 1

In order to be eligible to compete in PRIDE's Annual Achievement Recognition competition, each participating PRIDE community must submit a summary of its improvement activities for the year in the form of a project record book.

Only PRIDE related projects worked on during the program year, September 1, 1996 through August 31, 1997 may be included. The book's purpose is to briefly tell the story of the community's PRIDE Program.

A project record book including the insert pages may be ordered from the Kansas Department of Commerce & Housing for \$10. It is the only book that may be used, and only one project record book may be submitted by each community.

Judges give no extra consideration for a book's thickness or elaborate appearance. Be selective in what goes into the book; be concise. The book is used by the judges to gain insight into the community's PRIDE Program. The judge's decisions are based on what they hear and see in the community during their judging trip (September 22-26, 1997). Suggestion on how to complete the project record book can be found in the PRIDE Manual.

Welcome to PRIDE

Congratulations and best wishes to the following new 1997 PRIDE communities:

Marion, Mound City, Osborne, Palco, Towanda, and Woodston.



Printed on recycled paper.



K-State Research and Extension
 Extension Community Development
 Umberger Hall
 Manhattan, Kansas 66506-3415
 913-532-5840

This newsletter is published to provide communication among communities participating in the Kansas PRIDE Community Improvement Program. Your input is welcome.

PRIDE is jointly administered by K-State Research and Extension and the Kansas Department of Commerce & Housing.

Stan McAdoo
 Robert S. McAdoo
 Extension PRIDE Program Coordinator

Kansas State University, County Extension Councils and United States Department of Agriculture cooperating. All programs and materials available without discrimination on the basis of race, color, national origin, sex, age or disability.



P
R
I
D
E

May - June 1997

Kansans Building Better Communities

PRIDE CHANGES FOR YOU

After several months of information gathering, the PRIDE staff is pleased to announce that the "restructuring" of the PRIDE program is really beginning to take shape! The information was gathered from surveys and focus groups made up of volunteers from active, and former PRIDE programs.

The formal announcement on the program changes will be the focus of this year's PRIDE Day to be held on October 25, 1997. This will truly be an event you do not want to miss. Just as a teaser, here are a few of the directions you asked for that we are incorporating into the new program format:

* PRIDE staff will be offering comprehensive technical assistance to help develop a stronger local PRIDE organization. We will be focusing on the vision for your community and how to take action steps to achieve that vision.

* The current Community Achievement and Blue Ribbon components of the program are being reworked and combined to allow for a more comprehensive approach to local community development through the PRIDE program.

* Current PRIDE project record books will no longer be a requirement for program documentation. A simple quarterly

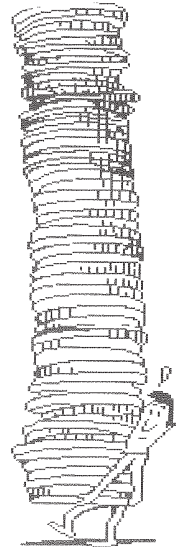
report form will take the place of the bulky, time-consuming book.

* Communities will not go through a competitive judging with other communities, instead each program that meets certain criteria will receive an annual evaluation by community development professionals that will discuss the successes to date, help you through hurdles you may have run into and make suggestions on how the local PRIDE program can have an even bigger effect on your community.

* The new PRIDE Program year will begin July 1, 1998 and end June 30, 1999. The first PRIDE Day, under the restructured program, will be held July 10, 1999.

* Community cash awards will still be presented, but they will not be determined by competition between communities. Instead monetary recognition will be based on the communities progress in meeting their identified goals.

We are really excited about these enhancements and refinements to the PRIDE program. We believe that these changes will strengthen the partnership between the state and local programs. Together we can achieve the desired results of stronger, more viable PRIDE communities.



"Stan, When's the last time you saw this much change?"

Home Pages on the Increase

Several PRIDE communities have taken advantage of the offer of the Kansas Library Network and have received assistance on setting up their community's Internet home page. Once established, communities may, free of charge, utilize the State Library's "Blue Skyways Network" to display their home page. A community's home page allows people, from all over the world, to view the positive things available and happening in your community. Information on developing your home page and what is required of each community can be obtained by calling Michael Piper, Executive Director, Kansas Library Network Board at 1-800-432-3919.

We're online!!

<http://www.oznet.ksu.edu/dep/cmdv/pride/welcome.htm>

Important PRIDE Dates

July 17 ... State PRIDE Board of Directors Meeting, Great Bend
 September 1 ... PRIDE project book is due
 September 22-26 ... PRIDE judging week
 October 25 ... State PRIDE Recognition Day, Salina

Staff Assistance is available

If your community would like help in organizing and documenting PRIDE projects for the annual judging process and/or how to best present your achievements to the judges, assistance is available. Local workshops can be scheduled by calling Bev Wilhelm (913) 296-3485, or Stan McAdoo (913) 532-5840. Remember, completed project books are due September 1 and judging will occur during the week of September 22-26.

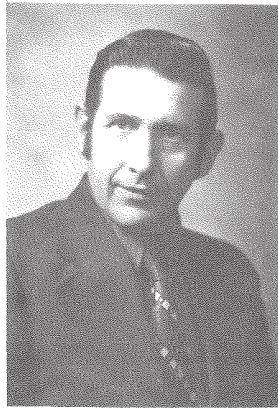
Board approves Blue Ribbon application

The State PRIDE Board approved Belleville for meeting all Blue Ribbon requirements in the beautification category during their April 24 meeting.

Next newsletter to highlight PRIDE Day

The September/October issue of the PRIDE newsletter will highlight PRIDE Day, 1997. As a result of many new and exciting happenings coming up in the PRIDE Program, the workshops will focus on information about the new program design and how to make the PRIDE Program an even stronger tool for communities. In addition, a motivational keynote, entertainment, the traditional display of project books, and an overall festive celebration is being planned. All communities are encouraged to sign-up for a community booth (free booth space, including an 8-foot table, will be available to all interested communities). This will be an excellent opportunity for your community to present your local PRIDE achievements to a state-wide audience.

Former PRIDE Program Coordinator to Retire

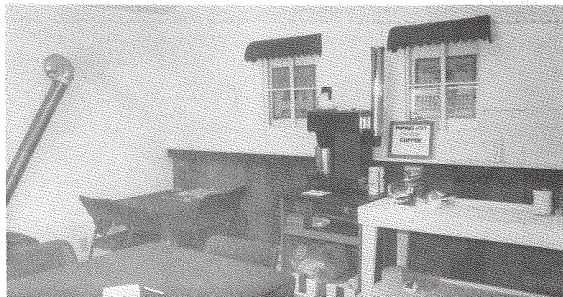


E.J. "Sonny" Sisk, will be retiring on July 1. To celebrate Sonny's 36 years with K-State Research and Extension, a reception will be held on Friday, June 6 (2:00-4:00) in the first floor lobby of KSU's Umberger Hall.

As many perhaps know, Sonny was the Northwest Area Community Development Specialist from 1975-1985 where he worked with many PRIDE communities on their programs. In 1986 he moved to Manhattan where he became the State PRIDE Program Coordinator for the Extension Service until 1989. Since 1989, Sonny has overseen the Kansas DIRECT Program for K-State Research and Extension.

Friends are encouraged to stop by and wish Sonny good wishes on his retirement.

Alton's New Coffee Shop Opens



During January, 1997, Alton's PRIDE committee recognized the need to establish a public gathering place. This need turned into a full blown pride project for this rural Osborne County community of 111 people. A recently dedicated coffee shop now occupies a prominent spot on Alton's main street as a result of many dedicated PRIDE volunteers.

The previously unused space, adjacent to Alton's community center and city office, was made available by

the city for the coffee shop. Local pride funds paid for the materials. The shop is maintained and operated by volunteers.

According to the Rev. Homer Smuck, project leader, "One of the strengths of this project is many people coming together to make it possible from remodeling to maintenance and operation." Rev. Smuck goes on to say, "Drop in and have a cup of coffee sometime. You are always welcome in Alton!"

Garden Plain Accomplishes Goal

A major project was accomplished this year in the Sedgwick County PRIDE community of Garden Plain (population - 823). According to PRIDE Chairperson, Ruth Becker, "The community will soon have a new medical clinic." Through the efforts of the Horizon Foundation, the Chamber of Commerce, and PRIDE, \$300,000 was raised through many local donations. One very substantial donation put the fundraising goal over the top. Known as the Steckline Family Medical Clinic, the Community had the facility ground breaking ceremony on May 4. "Garden Plain's next goal is to obtain a doctor for the clinic," says Becker. "Through the efforts of our community and the help of the Via Christe Medical Center, in Wichita, this will soon become a reality."

Congratulations Garden Plain for making your community even better!

Flourish, Flounder or Fail

On August 2, Basehor PRIDE and Gold PRIDE will be sponsoring an area-wide interactive PRIDE workshop. The Basehor community invites area communities to come and share information and ideas on "How to revitalize your PRIDE Program." Community PRIDE organizations will each share successes that caused them to flourish and factors that could cause a local program to fail.

The workshop will be held at the Holy-Field Winery, 18807 158th Street in Basehor (located at U.S. 24/40 Highway and 158th Street). Registration begins at 9:00 a.m. for a 10:00 a.m. kick-off. The workshop will adjourn at 3:00 p.m. Registration is \$10, which includes a catered lunch and materials. To register contact Basehor PRIDE Chairperson Chuck Wilderson at (913) 724-1057, or write Basehor PRIDE, P.O. Box 413, Basehor, Kansas 66007. Registrations are requested by July 15.

Highland's Health Projects selected for Video

The Office of Community Health, Kansas State University, was so impressed with the health projects undertaken by Highland's PRIDE Program that they offered to produce a video of the community's successful accomplishments. Eric Zoller, multimedia specialist with the Office of Community Health, K-State Research and Extension spent two days in Highland in preparation and filming of

the video. Zoller focused on Highland's three major health projects: The Love Line of PRIDE (Crisis Hot Line), the Food Pantry and the Diabetic Support Group. Several towns people participated in the video by telling how the projects were selected, developed, and implemented. Marian Thompson, Chairperson of Highland PRIDE, says, "The community feels honored to be highlighted in a video for its work in health care."

PRIDE Signs Require Maintenance

Are your community's PRIDE signs deteriorating? If so, you are not alone. Many PRIDE signs, throughout the state, are in need of attention. A few minutes each year is all that is required to keep signs in good order. A simple yearly washing and waxing (any car wax will do) will add years to the life of your signs.

If your community is currently enrolled in the PRIDE Program, new signs can be leased by contacting Bev Wilhelm at (913) 296-3485. If you observe, in your travels any deteriorated PRIDE signs, please let Bev know so that they can be replaced or discarded. Remember, nothing hurts the image of a community more than unsightly PRIDE signs.

