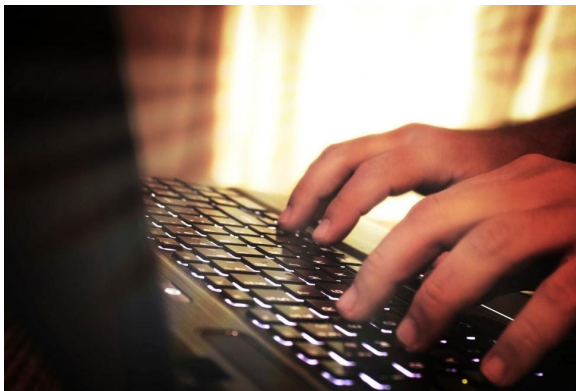


## IN THIS ISSUE:

- ❖ About Reporting
- ❖ Upcoming Educational Webinars
- ❖ Now is a Good Time to Plan a Community Cleanup Campaign
- ❖ Making Connections
- ❖ Up for a Community Visit?
- ❖ Events Calendar
- ❖ Facebook News
- ❖ Currently Enrolled Communities

### About Reporting...



#### Some important information to give our wonderful communities:

Since the Hale Library Fire we have been told that our database, while it is being updated yet again, is a bit lower on the list of priorities than other things such as student enrollment

and access to online resources associated with being a student. When we were told this we became irrationally offended (no we didn't) and told them to get back to work (again, no we didn't).

#### So here is what we do know:

We have been told that reporting opportunities will end December 31, 2018 for the 2018 reporting year. This means that the system will "shut off" at midnight of December 31 and you will no longer be able to report. We are to await further instructions on how enrollment will proceed after January 1. So, that puts Jan, Megan and myself in the same boat with you (Hooray! We love you guys!) while we wait on more information from our database tech gurus.

If you ask me, 2018 has been a pretty bumpy ride reporting wise (who could forget the out of the gate database crash and then the Hale Library fire), but I will say that what I have learned is that we work for and serve the most understanding, kind and considerate people on the planet. Thank you for always being patient with us as we roll with the tide with the database.

I will also say thank you for continuing on and being diligent about your reports. Without you there would not be:

- Opportunities for idea sharing

- Opportunities for networking
- Opportunities for mentoring
- Opportunities for educational programming
- The ability to report program impact to our stakeholders and program sponsors (The National Institute of Food and Agriculture, K-State Research and Extension, Kansas PRIDE, Inc., The Kansas Department of Commerce, and the Kansas Masons).

- **Tuesday, December 18 at 10:30am to 11:30am – How to Tell Your Story** – Barbara Anderson, Regional Project Manager with the Kansas Department of Commerce

All lessons will be facilitated by Jaime and/or Jan, with special guests to join us for sharing their expertise in the Q and A concerning the topics covered.

Register by emailing us at [PRIDE@ksu.edu](mailto:PRIDE@ksu.edu). Some of the sessions will have handouts that go along with the lesson. If you take advantage of the recorded version and want the handouts just give us a shout at [PRIDE@ksu.edu](mailto:PRIDE@ksu.edu) and we will get them to you!

So in close, don't forget your reporting (we know you won't) and as always, THANK YOU for all that you do for the great state of Kansas! – **Jaime Menon, Kansas PRIDE Co-Coordinator, K-State Research and Extension**  
[jmenon@ksu.edu](mailto:jmenon@ksu.edu)

Look forward to learning with you! – **Jaime Menon, Kansas PRIDE Co-Coordinator, K-State Research and Extension**  
[jmenon@ksu.edu](mailto:jmenon@ksu.edu)



## Upcoming Educational Webinars

Educational webinars throughout the fall and winter:

- **Tuesday, November 20 at 10:30am to 11:30am – Getting Organized with Board Roles and Responsibilities** – Bruce Chladny, Wyandotte County Extension



## Now is a Good Time to Plan a Community Cleanup Campaign



The weather may be getting colder, but it doesn't mean you have to wait until spring to get things done. Now is a great time to start planning your community's cleanup and fix-up efforts for next year. Campaigns like this improve the physical appearance of your community, creates community pride, and makes your community more attractive to potential residents, tourists, and prospective employers.

Not sure how to go about organizing a cleanup project, or would you like to build upon previous experiences with new ideas? Visit the K-State Research and Extension bookstore online, and download the free Conducting a Community Cleanup Fix-up Campaign publication in PDF format:

<https://www.bookstore.ksre.ksu.edu/pubs/mf931.pdf> - **Jan Steen, Kansas PRIDE Co-Coordinator, K-State Research and Extension**  
[jmsteen@ksu.edu](mailto:jmsteen@ksu.edu)

## Making Connections

An important part of any career is networking. At the beginning of this month I attended the National SASES Meeting in

Baltimore, Maryland. SASES is an undergrad organization that pairs with the Tri-Societies of Agronomy which are the Crop Science Society of America, Soil Science Society of America, and the American Society of Agronomy. While attending this conference, I was able to compete in an internship poster contest, network with people in the industry, and run for office. I was able to meet former presidents of ASA, current and past professors from different universities, and students from across the US. Now I am the Recording Secretary for the National SASES Officer team, which will lead me to even more connections in the industry. Attending professional events such as this one while in college has led to so many opportunities, and will increase my network for when I go into my career. I'll also be networking outside of my career field and with the members of the community once I graduate. These connections will be important to have so I get to know my fellow neighbors. I'm curious to know what opportunities you've had to network in your career and within your community. **—Megan Owens, Student Office Professional** [megan963@ksu.edu](mailto:megan963@ksu.edu)



## Up for a Community Visit?

Would your PRIDE organization like to be brought up to speed on available opportunities? Have you had a leadership change and would like to make sure you're on the right track? Let us know and we'll work on scheduling a time to meet with you. Send us an email at [PRIDE@ksu.edu](mailto:PRIDE@ksu.edu). – *Jan Steen, Kansas PRIDE Co-Coordinator, K-State Research and Extension* [jmsteen@ksu.edu](mailto:jmsteen@ksu.edu)



## Facebook News



Don't forget to like us on Facebook if you haven't already. We post there often, and some of that information isn't available in the newsletter – webinar announcements, community news, alerts. Head over to <http://www.facebook.com/KansasPRIDE/> to check us out, or "Like" us to see opportunities that are upcoming! Also invite us to "Like" your page if you have one! – *Jan Steen, Kansas PRIDE Co-Coordinator, K-State Research and Extension* [jmsteen@ksu.edu](mailto:jmsteen@ksu.edu)

## Events Calendar

### Quarterly Report Dates:

April 15<sup>th</sup>      July 15<sup>th</sup>

October 15<sup>th</sup>    January 15<sup>th</sup>



### Opportunity Dates:

December 31, 2018- LAST DAY TO REPORT for 2018

February 15, 2019- Award Applications Due





## Communities Currently Enrolled in the Kansas PRIDE Program



These communities have enrolled in the Kansas PRIDE Program this year. If you're meeting as a local PRIDE group and don't see your community name here, it's not too late to enroll! Go to:

<http://kansasprideprogram.k-state.edu/enrollment-reporting/index.html>

Click on the blue "Enroll" button to continue.

Admire	Council Grove	Lakin	Olsburg
Agra	Delia	Larned	Overbrook
Alden	Dover	Lecompton	Ozawkie
Almena	Elk City	Lenora	Park City
Alton	Ellis	Leonardville	Perry
Arlington	Fort Scott	LeRoy	Potwin
Ashland	Glasco	Lincoln	Randolph
Assaria	Grainfield	Linn Valley	Riley
Basehor	Grinnell	Lucas	Rossville
Baxter Spring	Haysville	Luray	Rozel
Belleville	Herndon	Macksville	Russell
Blue Rapids	Highland	Marion	Savonburg
Burlingame	Hoyt	McFarland	Solomon
Bushton	Humboldt	Melvern	Stockton
Caney	Independence	Moran	Tampa
Centralia	Iola	Mount Hope	Vermillion
Clifton	Kinsley	Natoma	Wakefield
Columbus	La Harpe	Norton	Wilson